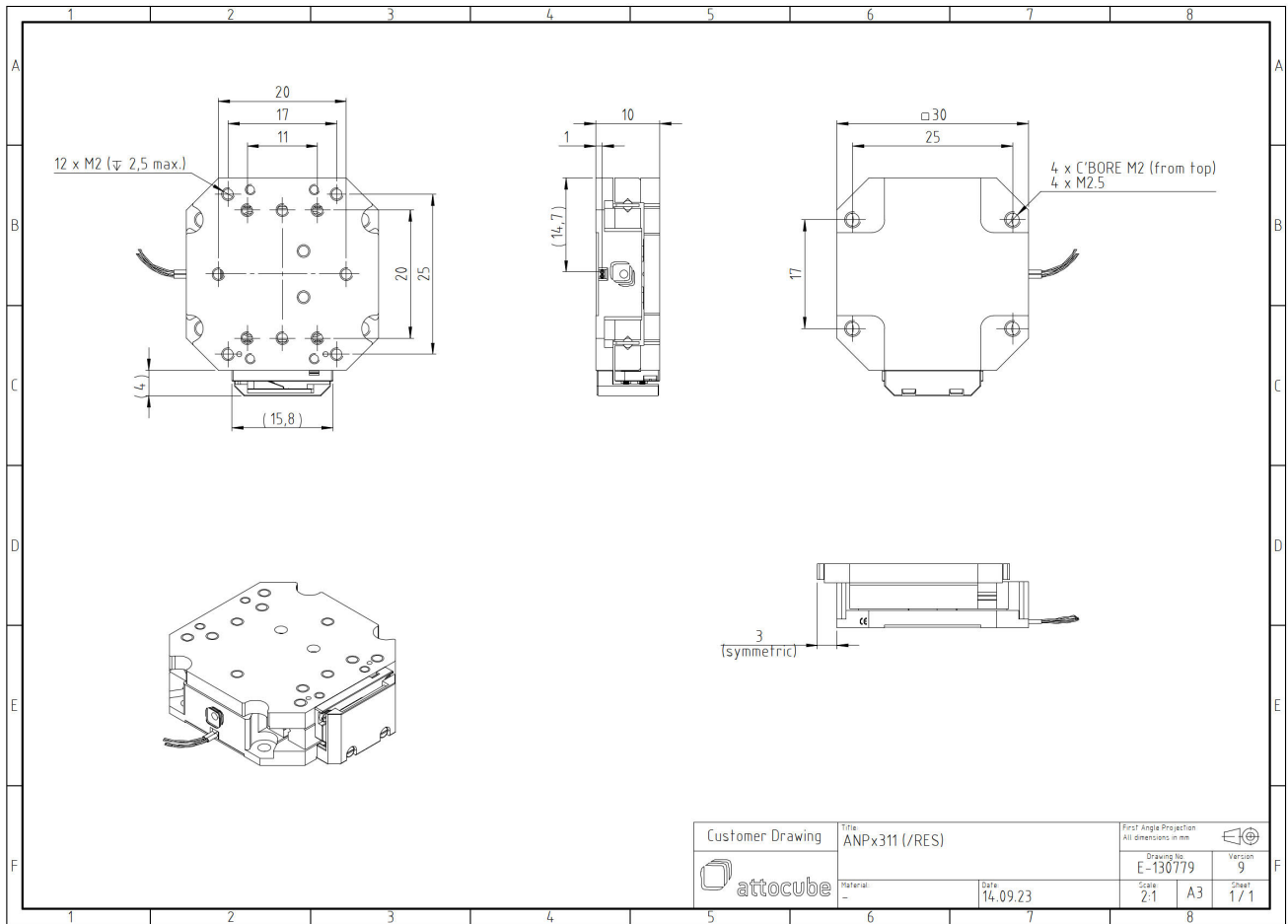


ANPx311/HL/LT/HV - linear x-nanopositioner

1008943

Technical Specifications

Size and Dimensions	
footprint; height	30 mm x 30 mm; 10 mm
maximum installation space	36 mm x 30 mm; 10 mm
weight	30 g
height	10 mm
cable	30 cm cable with connector
Materials	
positioner body	titanium
actuator	PZT ceramics
connecting wires	insulated twisted pair, copper
Coarse Positioning Mode	
travel range (step mode)	5.8 mm
maximum drive velocity @ 300 K	~ 3 mm/s
input voltage range	0 - 60 V
Fine Positioning Mode	
fine linear positioning range @ 300 K	5 µm
fine linear positioning range @ 4 K	0.8 µm
fine positioning resolution	sub-nm
input DC voltage range @ 300 K	0 - 100 V
input DC voltage range @ 4 K	0 - 150 V
Load (@ ambient conditions)	
maximum load	2 kg
maximum dynamic force along the axis	2 N
General Specifications	
environment	/LT/HV
min. first natural frequency	2600 Hz



Customer Drawing	Title: ANPx311 (/RES)		First Angle Projection All dimensions in mm	
	Material: -		Drawing No: E-130779	Version: 9
Date: 14.09.23		Scale: 2:1	A3	Sheet: 1 / 1