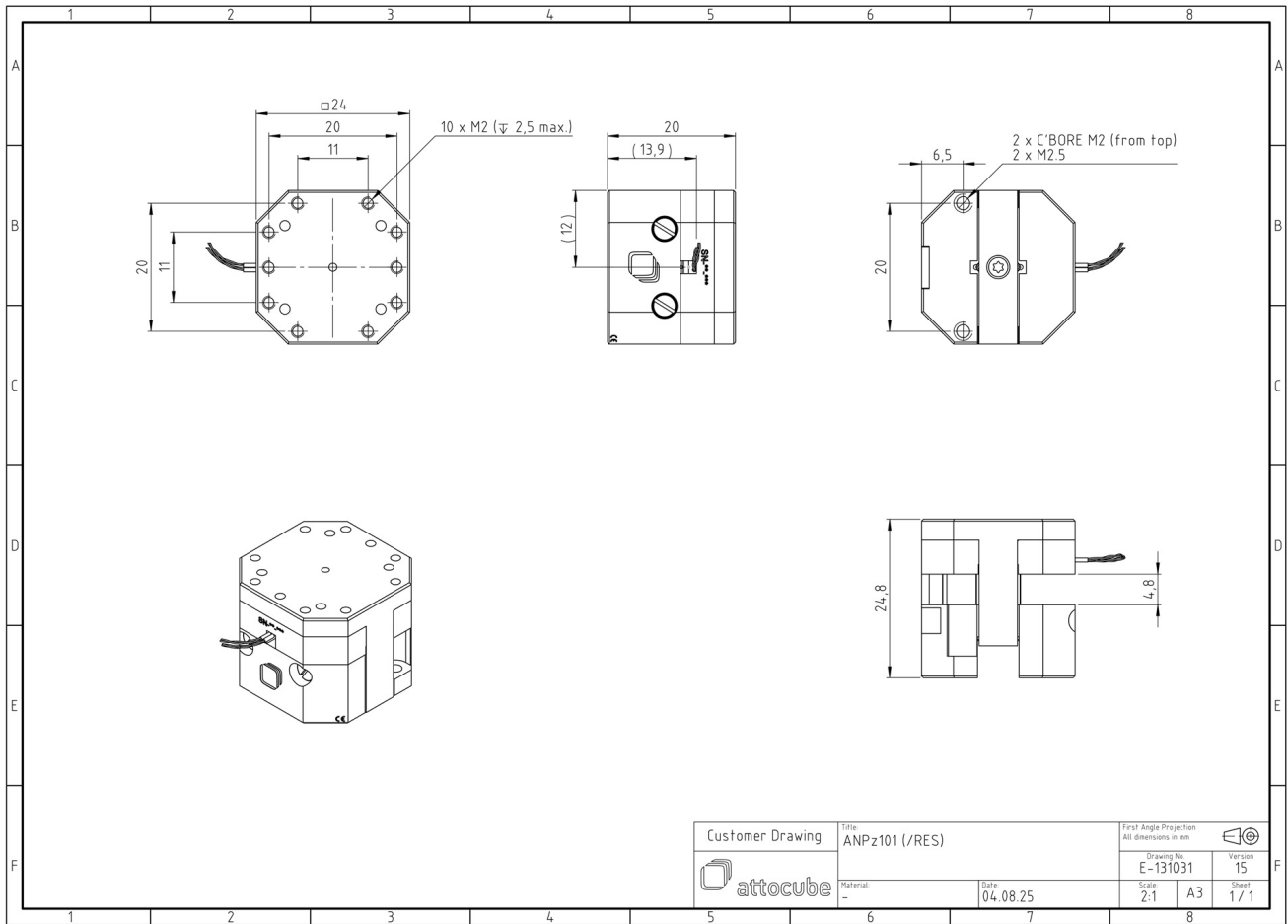


ANPz101/RES/RT - linear z-nanopositioner

1002813

Technical Specifications

Size and Dimensions	
footprint; height	24 mm x 24 mm; 20 mm
maximum installation space	24 mm x 24 mm; 25 mm
weight	38 g
height	20 mm
cable	30 cm cable with connector
Materials	
positioner body	titanium
actuator	PZT ceramics
connecting wires	insulated twisted pair, copper
Coarse Positioning Mode	
travel range (step mode)	5 mm
maximum drive velocity @ 300 K	~ 3 mm/s
input voltage range	0 - 60 V
Fine Positioning Mode	
fine linear positioning range @ 300 K	3.5 μ m
fine positioning resolution	sub-nm
input DC voltage range @ 300 K	0 - 100 V
Position Encoder	
readout mechanism	resistive sensor
encoded travel range	full travel
sensor resolution	~ 200 nm
sensor power (when measuring)	0.01 - 1 mW
repeatability	1..2 μ m (unidirectional)
Load (@ ambient conditions)	
maximum load	200 g
maximum dynamic force along the axis	5 N
General Specifications	
environment	/RT



Customer Drawing	Title: ANPz101 (/RES)		First Angle Projection All dimensions in mm	
	Material: --		Date: 04.08.25	
attocube	Drawing No: E-131031		Version: 15	
	Scale: 2:1		Sheet: 1 / 1	