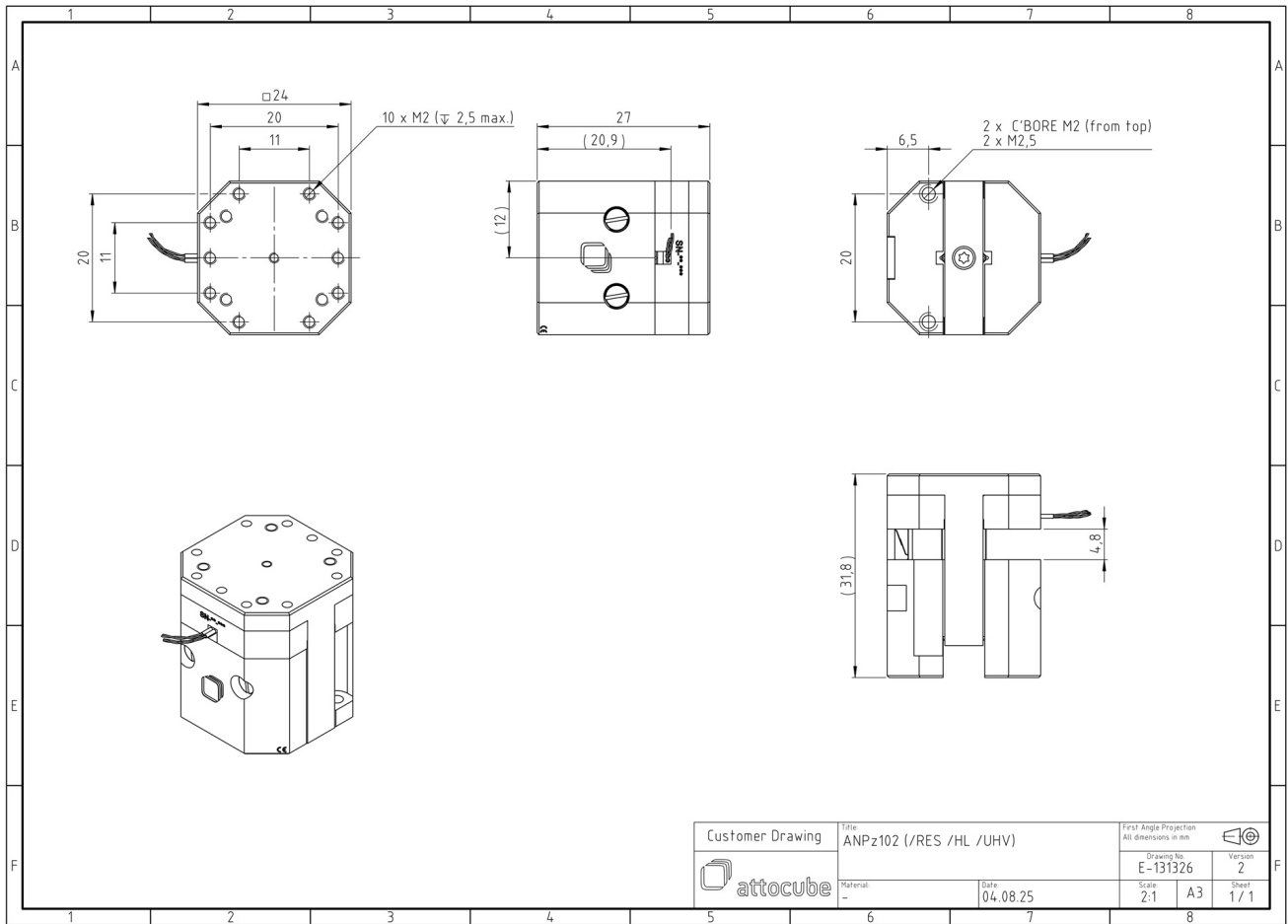


# ANPz102/HL/LT/HV - linear z-nanopositioner

1028561

## Technical Specifications

<b>Size and Dimensions</b>	
footprint; height	24 mm x 24 mm; 27 mm
maximum installation space	24 mm x 24 mm; 32 mm
weight	53 g
height	27 mm
cable	30 cm cable with connector
<b>Materials</b>	
positioner body	titanium
actuator	PZT ceramics
connecting wires	insulated twisted pair, copper
<b>Coarse Positioning Mode</b>	
travel range (step mode)	4.8 mm
maximum drive velocity @ 300 K	~ 3 mm/s
input voltage range	0 - 60 V
<b>Fine Positioning Mode</b>	
fine linear positioning range @ 300 K	3.5 $\mu$ m
fine linear positioning range @ 4 K	0.5 $\mu$ m
fine positioning resolution	sub-nm
input DC voltage range @ 300 K	0 - 100 V
input DC voltage range @ 4 K	0 - 150 V
<b>Load (@ ambient conditions)</b>	
maximum load	300 g
maximum dynamic force along the axis	3 N
<b>General Specifications</b>	
environment	/LT/HV



Customer Drawing	Title		First Angle Projection	
	ANPz102 (/RES /HL /UHV)		All dimensions in mm	
attocube	Material:	Date:	Drawing No.	Version
	-	04.08.25	E-131326	2
			Scale:	Sheet
			2:1	A3
				1 / 1