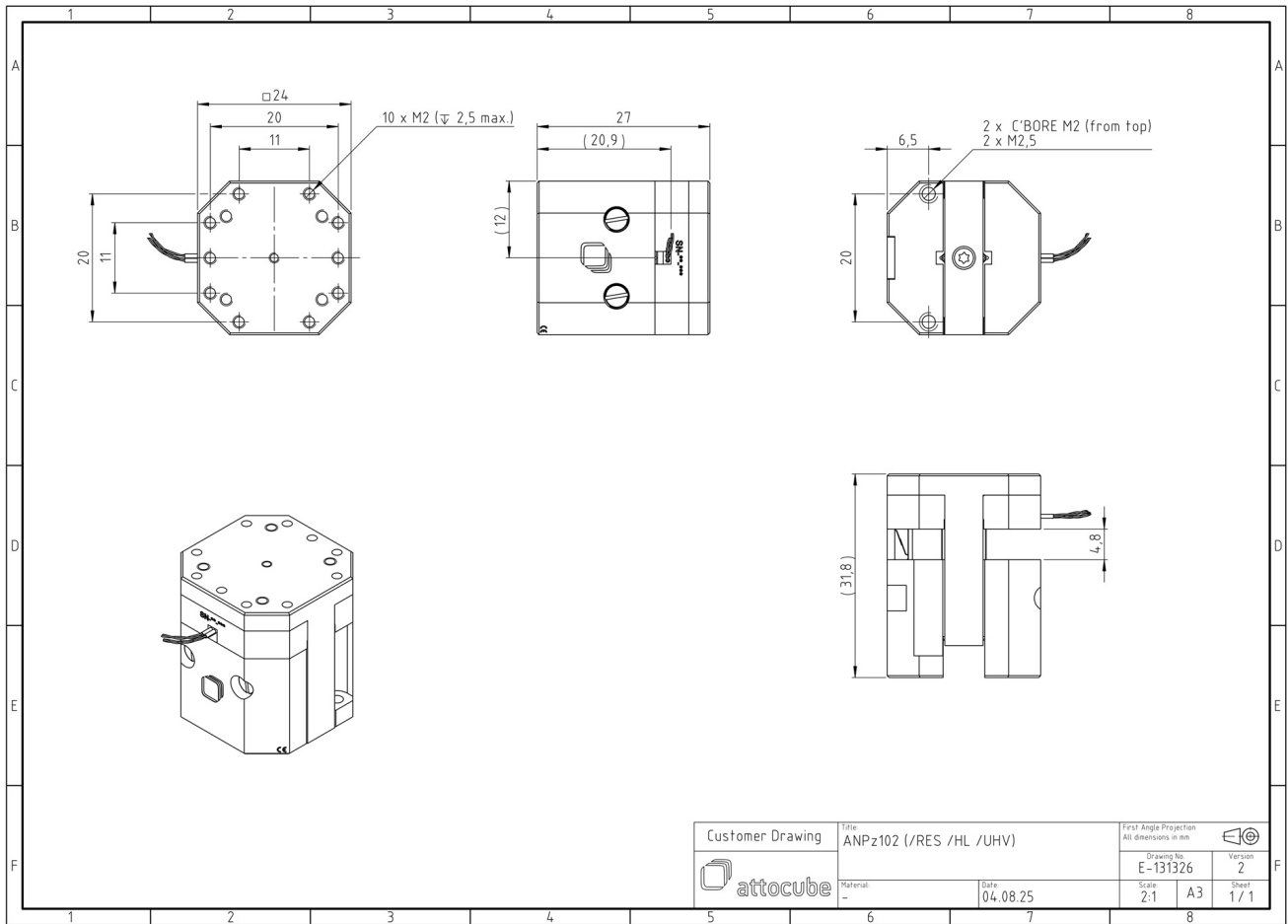


ANPz102/RES/HL/LT/HV - linear z-nanopositioner

1028564

Technical Specifications

Size and Dimensions	
footprint; height	24 mm x 24 mm; 27 mm
maximum installation space	24 mm x 24 mm; 32 mm
weight	55 g
height	27 mm
cable	30 cm cable with connector
Materials	
positioner body	titanium
actuator	PZT ceramics
connecting wires	insulated twisted pair, copper
Coarse Positioning Mode	
travel range (step mode)	4.8 mm
maximum drive velocity @ 300 K	~ 3 mm/s
input voltage range	0 - 60 V
Fine Positioning Mode	
fine linear positioning range @ 300 K	3.5 μ m
fine linear positioning range @ 4 K	0.5 μ m
fine positioning resolution	sub-nm
input DC voltage range @ 300 K	0 - 100 V
input DC voltage range @ 4 K	0 - 150 V
Position Encoder	
readout mechanism	resistive sensor
encoded travel range	full travel
sensor resolution	~ 200 nm
sensor power (when measuring)	0.01 - 1 mW
repeatability	1..2 μ m (unidirectional)
Load (@ ambient conditions)	
maximum load	300 g
maximum dynamic force along the axis	3 N
General Specifications	
environment	/LT/HV



Customer Drawing	Title		First Angle Projection	
	ANPz102 (/RES /HL /UHV)		All dimensions in mm	
attocube	Material:	Date:	Drawing No.	Version
	-	04.08.25	E-131326	2
			Scale:	Sheet
			2:1	A3 1 / 1