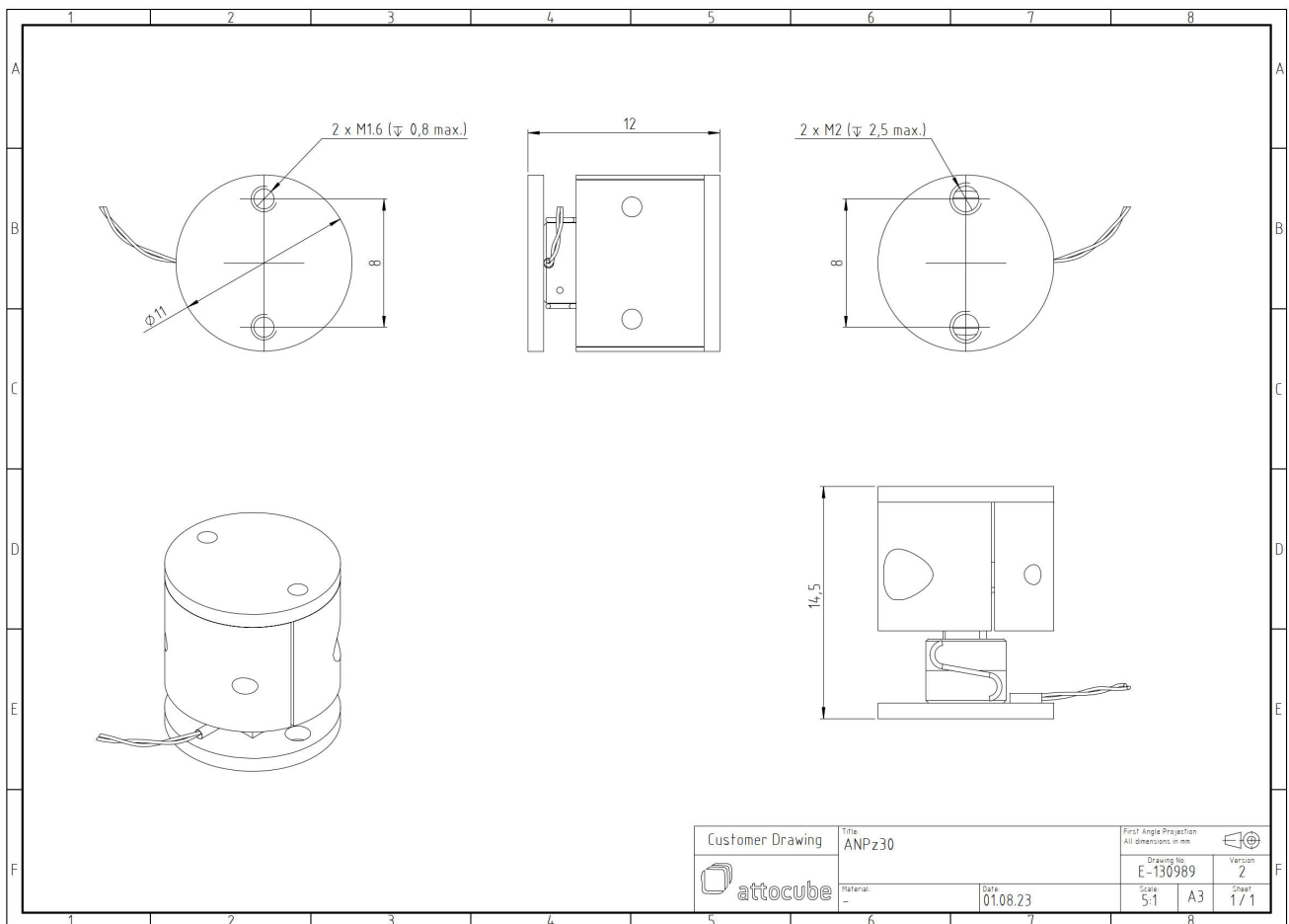


ANPz30/LT/HV - linear z-nanopositioner

1000406

Technical Specifications

Size and Dimensions	
footprint; height	11 mm diameter; 12 mm
maximum installation space	11 mm diameter; 14.5 mm
weight	3.8 g
height	12 mm
cable	30 cm cable with connector
Materials	
positioner body	beryllium copper & titanium
actuator	PZT ceramics
connecting wires	insulated twisted pair, copper
Coarse Positioning Mode	
travel range (step mode)	2.5 mm
maximum drive velocity @ 300 K	~ 1 mm/s
input voltage range	0 - 60 V
Fine Positioning Mode	
fine linear positioning range @ 300 K	3.5 μ m
fine linear positioning range @ 4 K	0.5 μ m
fine positioning resolution	sub-nm
input DC voltage range @ 300 K	0 - 100 V
input DC voltage range @ 4 K	0 - 150 V
Load (@ ambient conditions)	
maximum load	10 g
maximum dynamic force along the axis	0.2 N
General Specifications	
environment	/LT/HV



Customer Drawing	Title	ANPz30		First Angle Projection	
	Material	Date	01.08.23	Scale	5:1
attocube	Drawing No.	E-130989		Version	2
	Sheet	1 / 1		Scale	A3