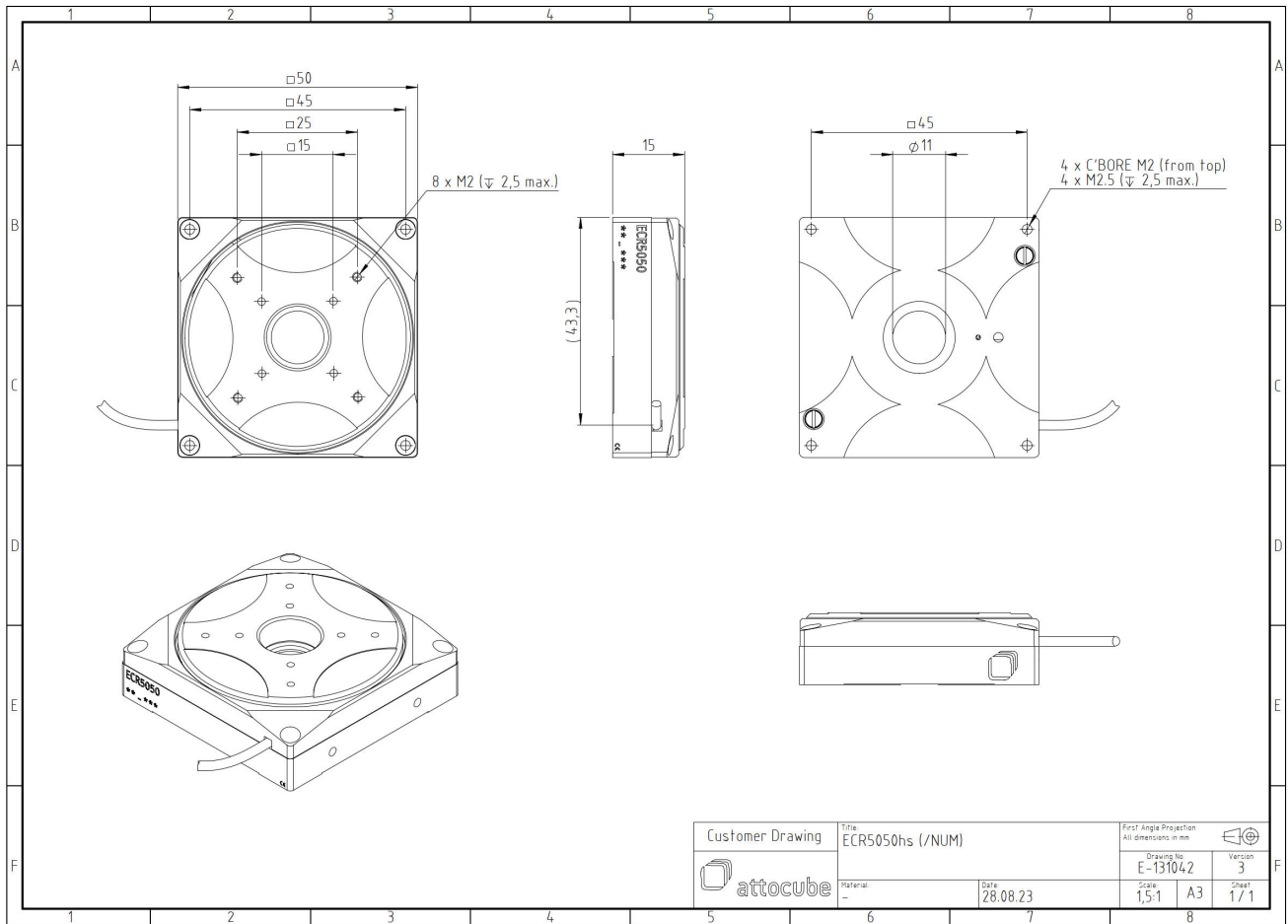


# ECR5050hs/AL/NUM/RT

1012480

## Technical Specifications

<b>Size and Dimensions</b>	
footprint; height	50 mm x 50 mm; 15 mm
weight (aluminium version)	102 g
height	15 mm
cable	50 cm cable with connector
<b>Materials</b>	
positioner body	aluminum
actuator	PZT ceramics
connecting wires	copper, jacket: RT: PTFE, HV/UHV: fiberglass
<b>Coarse Positioning Mode</b>	
travel range (step mode)	360 ° endless
maximum drive velocity @ 300 K	15 °/s
input voltage range	0 - 45 V
<b>Fine Positioning Mode</b>	
fine angular positioning range @ 300 K	15 m°
fine positioning resolution	μ°
input DC voltage range	0 - 45 V
<b>Position Encoder</b>	
readout mechanism	optoelectronic sensor
encoded travel range	360°
sensor resolution	0.01 m°
sensor power (when measuring)	300 mW
repeatability	1 m° (bidirectional)
<b>Load (@ ambient conditions)</b>	
maximum load	2 kg
maximum dynamic torque around axis	1 Ncm
<b>Error Motion</b>	
wobble	< 1 mrad
<b>General Specifications</b>	
environment	/RT
operating temperature range	17 - 25 °C
operating humidity range	40 - 60%



Customer Drawing	Title: ECR5050hs (/NUM)		First Angle Projection All dimensions in mm	
	Material: -		Drawing No: E-131042	Version: 3
Date: 28.08.23		Scale: 1,5:1	A3	Sheet: 1 / 1