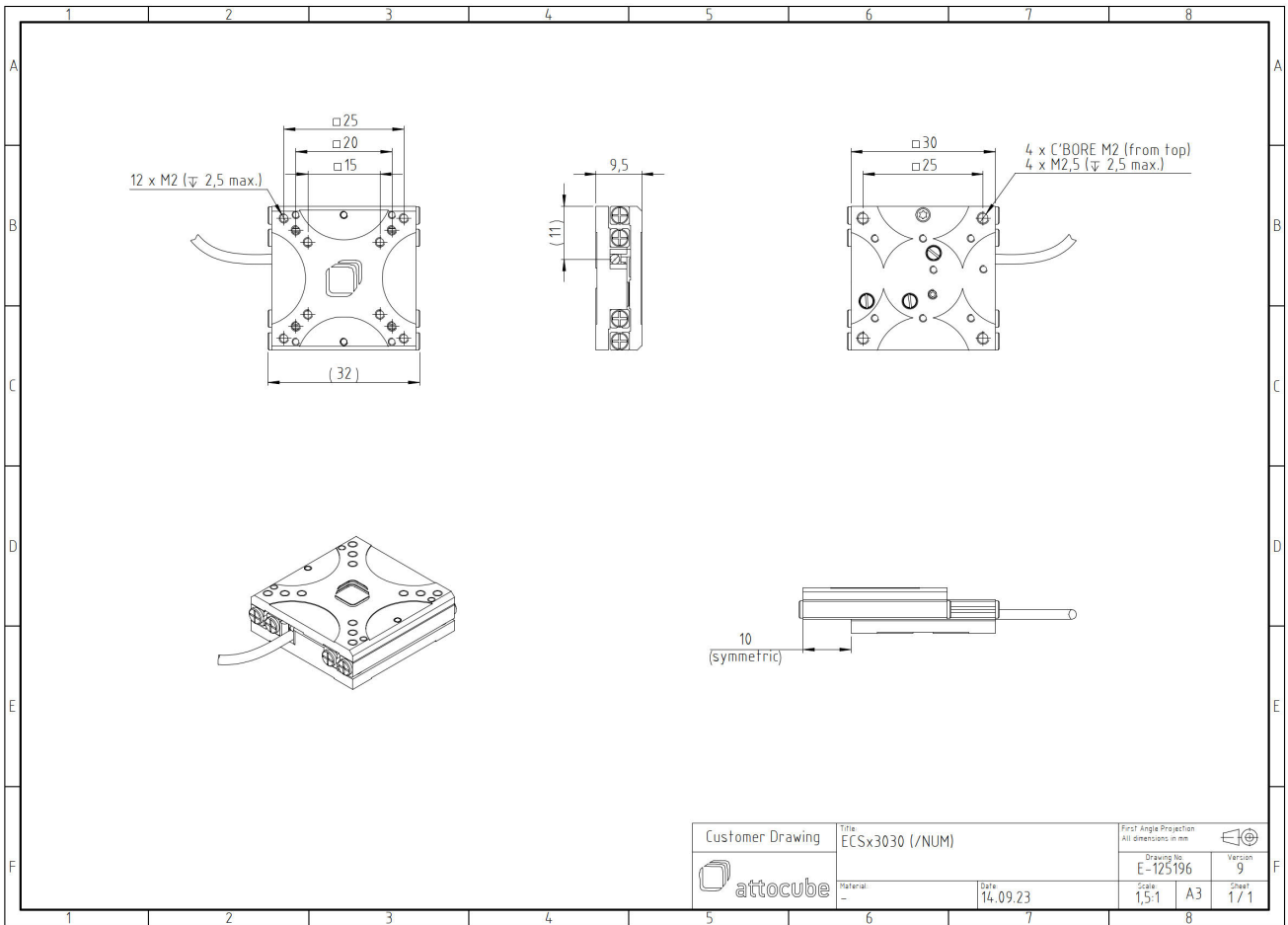


ECSx3030/AI/NUM/RT

1005659

Technical Specifications

Size and Dimensions	
footprint; height	30 mm x 30 mm; 9.5 mm
maximum installation space	30 mm x 51.6 mm; 9.5 mm
weight (aluminium version)	29 g
height	9.5 mm
cable	50 cm cable with connector
Materials	
positioner body	aluminum
positioner body (/HV, /UHV)	stainless steel
actuator	PZT ceramics
connecting wires	copper, jacket: RT: PTFE, HV/UHV: fiberglass
Coarse Positioning Mode	
travel range (step mode)	20 mm
maximum drive velocity @ 300 K	4.5 mm/s
input voltage range	0 - 45 V
Fine Positioning Mode	
fine linear positioning range @ 300 K	1.6 μ m
fine positioning resolution	sub-nm
input DC voltage range	0 - 45 V
Position Encoder	
readout mechanism	optoelectronic sensor
encoded travel range	entire travel
sensor resolution	1 nm
sensor power (when measuring)	300 mW
repeatability	50 nm (bidirectional)
Load (@ ambient conditions)	
maximum load	1 kg
maximum dynamic force along the axis	1 N
General Specifications	
environment	/RT
operating temperature range	17 - 25 °C
operating humidity range	40 - 60%



Customer Drawing	Title: EC(S)x3030 (/NUM)		First Angle Projection All dimensions in mm	
	Material: -		Drawing No. E-125196	Version 9
Date: 14.09.23		Scale: 1,5:1	A3	Sheet: 1 / 1