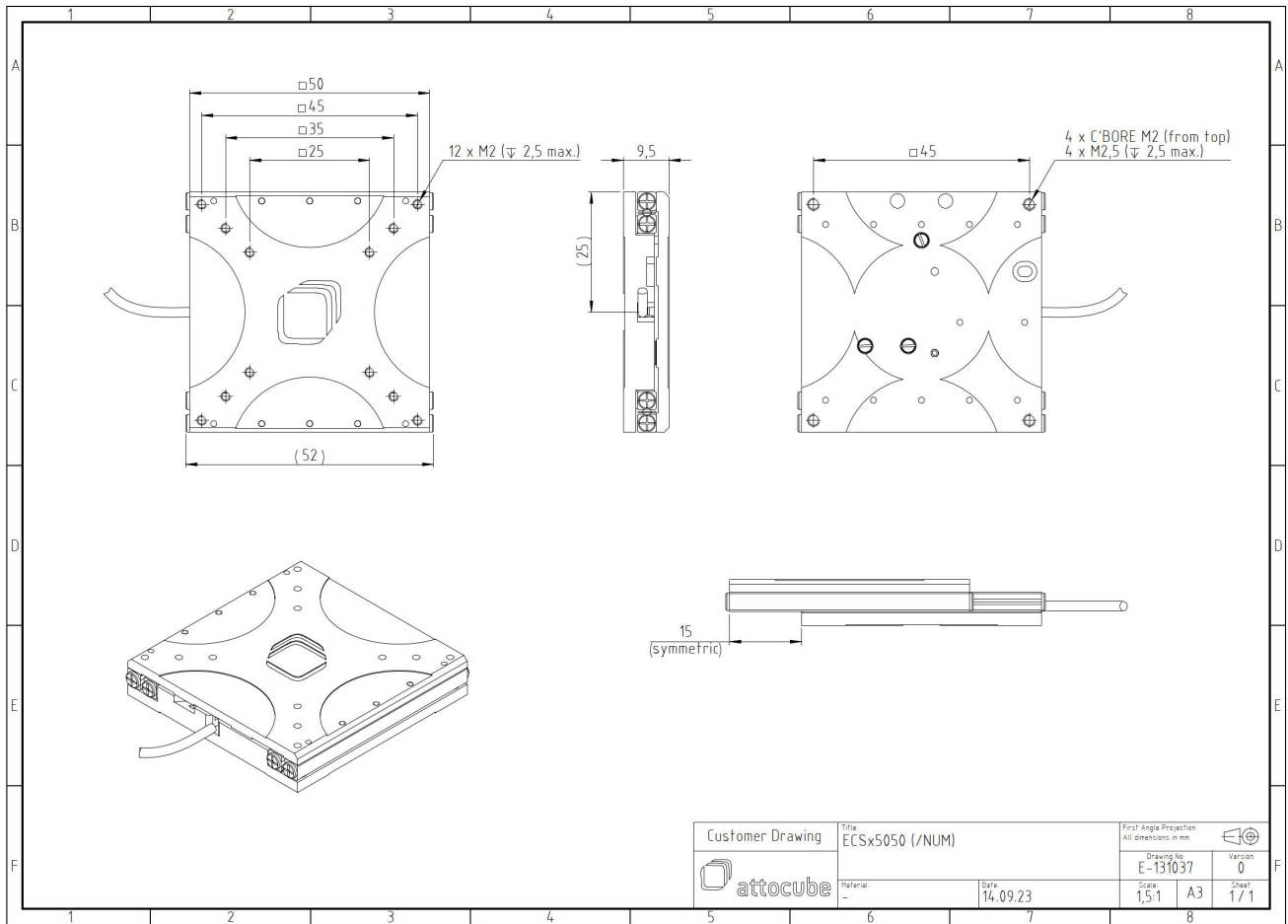


# ECSx5050/AI/HL/RT

1008840

## Technical Specifications

<b>Size and Dimensions</b>	
footprint; height	50 mm x 50 mm; 9.5 mm
maximum installation space	50 mm x 81.6 mm; 9.5 mm
weight (aluminium version)	70 g
height	9.5 mm
cable	50 cm cable with connector
<b>Materials</b>	
positioner body	aluminum
actuator	PZT ceramics
connecting wires	copper, jacket: RT: PTFE, HV/UHV: fiberglass
<b>Coarse Positioning Mode</b>	
travel range (step mode)	30 mm
maximum drive velocity @ 300 K	4.5 mm/s
input voltage range	0 - 45 V
<b>Fine Positioning Mode</b>	
fine linear positioning range @ 300 K	1.6 $\mu$ m
fine positioning resolution	sub-nm
input DC voltage range	0 - 45 V
<b>Load (@ ambient conditions)</b>	
maximum load	2 kg
maximum dynamic force along the axis	5 N
<b>Error Motion</b>	
roll E_AX	specified* 1.25 mrad (expected** < 0.25 mrad)
pitch E_BX	specified* 1.75 mrad (expected** < 1 mrad)
yaw E_CX	specified* 1.25 mrad (expected** < 0.35 mrad)
y-Straightness E_YX	specified* 5 $\mu$ m (expected** < 2 $\mu$ m)
z-Straightness E_ZX	specified* 9 $\mu$ m (expected** < 5 $\mu$ m)
*	specified: guaranteed for every positioner
**	expected: typically met by most positioners
<b>General Specifications</b>	
environment	/RT
operating temperature range	17 - 25 °C
operating humidity range	40 - 60%



Customer Drawing	Title	ECSx5050 (/NUM)		First Angle Projection All dimensions in mm	
	Material:	Date:	14.09.23	Drawing No.	E-131037
attocube		Scale:	1,5:1	Version:	0
				Sheet:	1 / 1