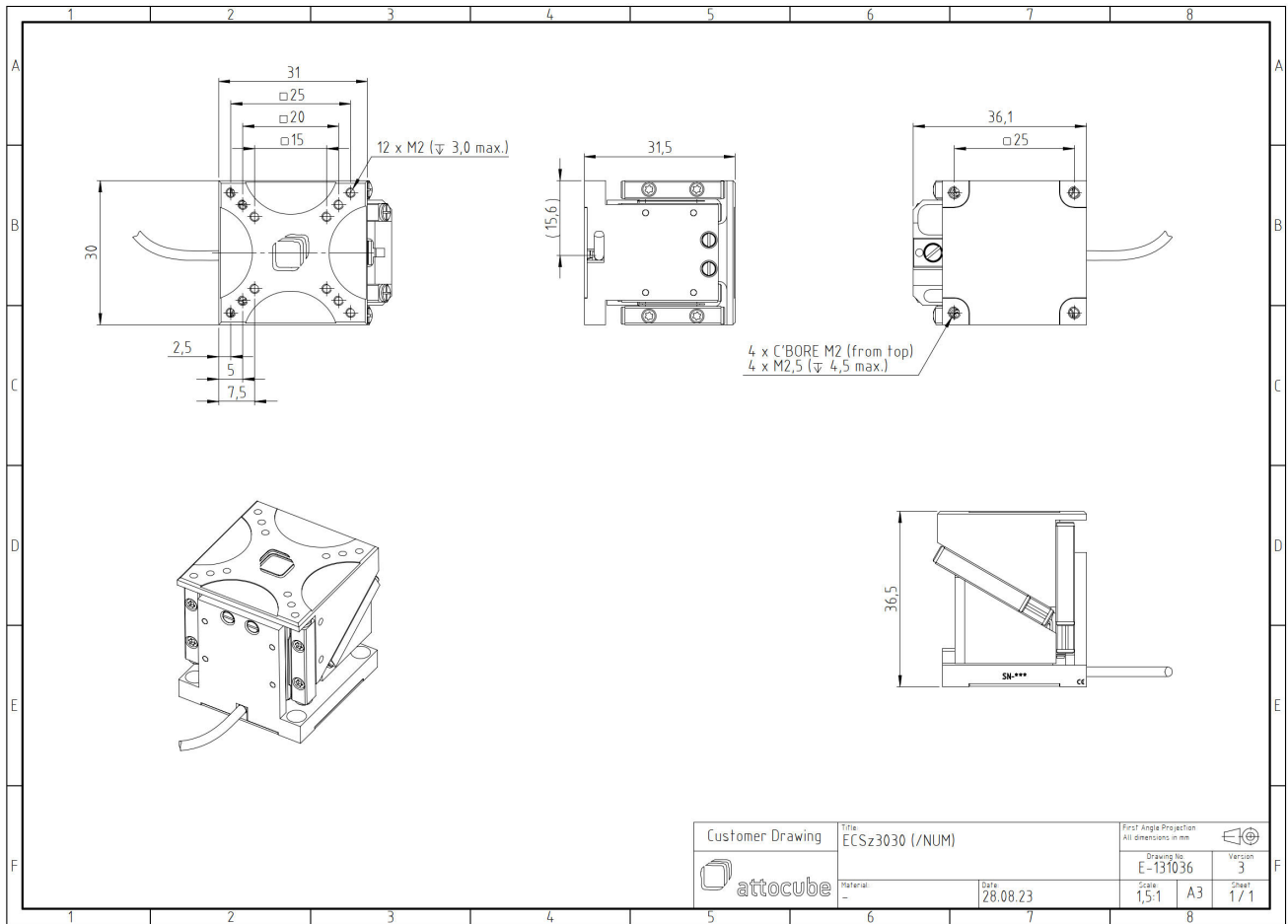


# ECSz3030/AI/NUM/RT

1012903

## Technical Specifications

<b>Size and Dimensions</b>	
footprint; height	30 x 31; 31.5 mm
maximum installation space	30 mm x 36.1 mm; 36.5 mm
weight (aluminium version)	90 g
height	31.5 mm
cable	50 cm cable with connector
<b>Materials</b>	
positioner body	aluminum
actuator	PZT ceramics
connecting wires	copper, jacket: RT: Teflon/PTFE
<b>Coarse Positioning Mode</b>	
travel range (step mode)	5 mm
maximum drive velocity @ 300 K	2 mm/s
input voltage range	0 - 45 V
<b>Fine Positioning Mode</b>	
fine linear positioning range @ 300 K	0.8 $\mu$ m
fine positioning resolution	sub-nm
input DC voltage range	0 - 45 V
<b>Position Encoder</b>	
readout mechanism	optoelectronic sensor
encoded travel range	entire travel
sensor resolution	1 nm
sensor power (when measuring)	300 mW
repeatability	50 nm (bidirectional)
<b>Load (@ ambient conditions)</b>	
maximum load	400 g
maximum dynamic force along the axis	4 N
<b>General Specifications</b>	
environment	/RT
operating temperature range	17 - 25 °C
operating humidity range	40 - 60%



Customer Drawing	Title	First Angle Projection	
	ECSz3030 (/NUM)		All dimensions in mm
attocube	Material	Drawing No.	Version
		E-131036	3
	Date	Scale	Sheet
	28.08.23	1,5:1	A3 1 / 1